

# FRENCHMAN'S RESERVE PCD - GOLF COURSE

BEING A REPLAT OF TRACT G AND A PORTION OF TRACT C, FRENCHMAN'S RESERVE PCD - PLAT ONE, AS RECORDED IN PLAT BOOK 92, AT PAGE 11, TRACT OS1, FRENCHMAN'S RESERVE PCD - PLAT "A", AS RECORDED IN PLAT BOOK 92, AT PAGE 194, TRACTS OS1 AND OS4, FRENCHMAN'S RESERVE PCD - PLAT "B", AS RECORDED IN PLAT BOOK 96, AT PAGE 102, A PORTION OF TRACT OS2, FRENCHMAN'S RESERVE PCD - PLAT "D", AS RECORDED IN PLAT BOOK 93, AT PAGE 123, TRACTS "G1" AND "G2", FRENCHMAN'S RESERVE PCD - PLAT E, AS RECORDED IN PLAT BOOK 101, AT PAGE 1, TRACTS A, B, C, D, E, H, OS1 AND OS2, FRENCHMAN'S RESERVE PCD - PLAT F, AS RECORDED IN PLAT BOOK 93, AT PAGE 82, TRACTS C AND D, FRENCHMAN'S RESERVE PCD - CLUBHOUSE, AS RECORDED IN PLAT BOOK 94, AT PAGE 138, PUBLIC RECORDS, PALM BEACH COUNTY, FLORIDA.

LYING IN SECTION 31, TOWNSHIP 41 SOUTH, RANGE 43 EAST,  
CITY OF PALM BEACH GARDENS, PALM BEACH COUNTY, FLORIDA.

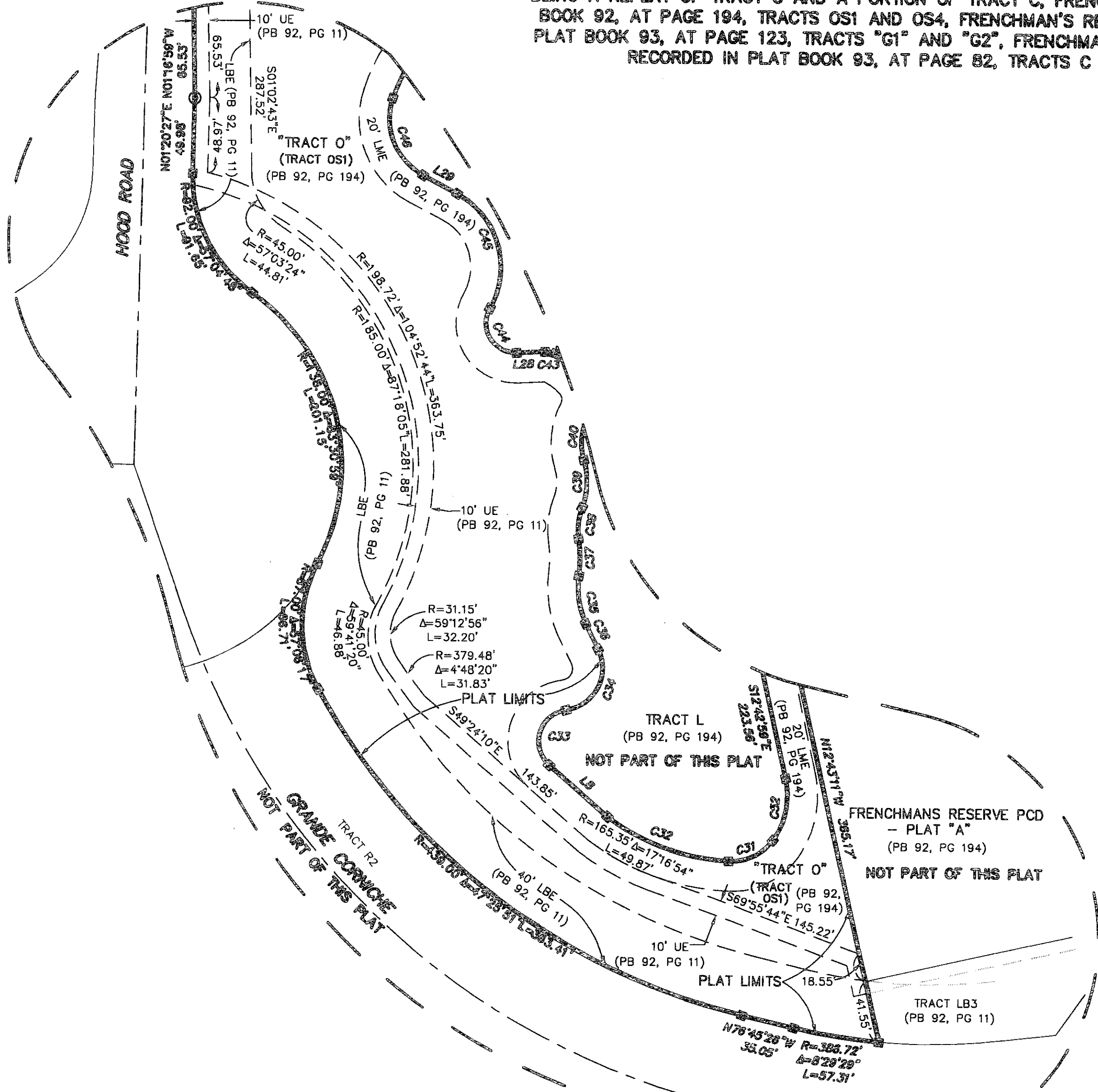
OCTOBER, 2006 SHEET 14 OF 15

86

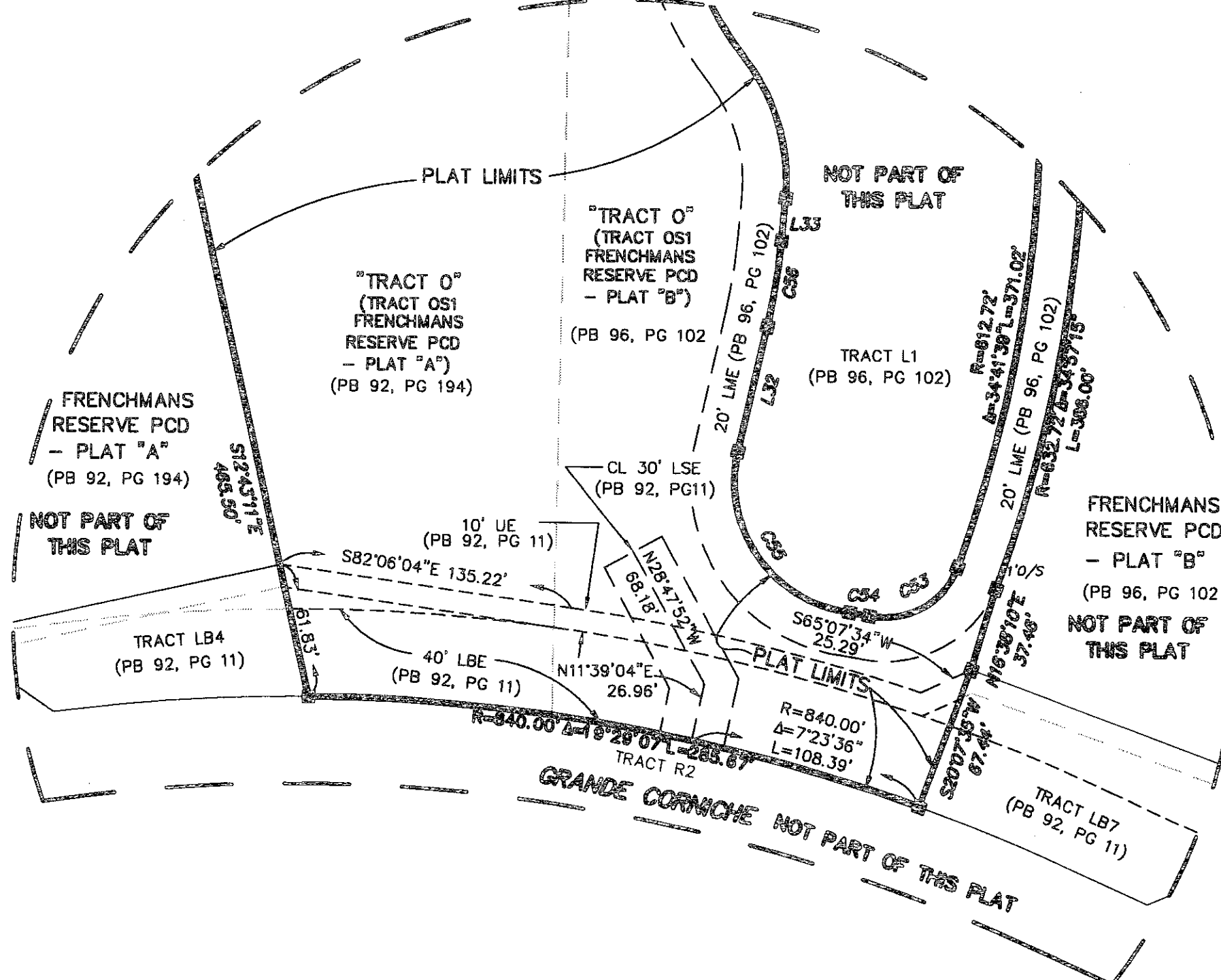
STATE OF FLORIDA  
COUNTY OF PALM BEACH  
THIS PLAT WAS FILED FOR  
RECORD AT \_\_\_\_\_ M.  
THIS \_\_\_\_\_ DAY OF \_\_\_\_\_  
A.D. 2006 AND DULY RECORDED  
IN PLAT BOOK \_\_\_\_\_ ON  
PAGES \_\_\_\_\_ AND \_\_\_\_\_  
SHARON R. BOCK  
CLERK AND COMPTROLLER

BY: \_\_\_\_\_  
DEPUTY CLERK

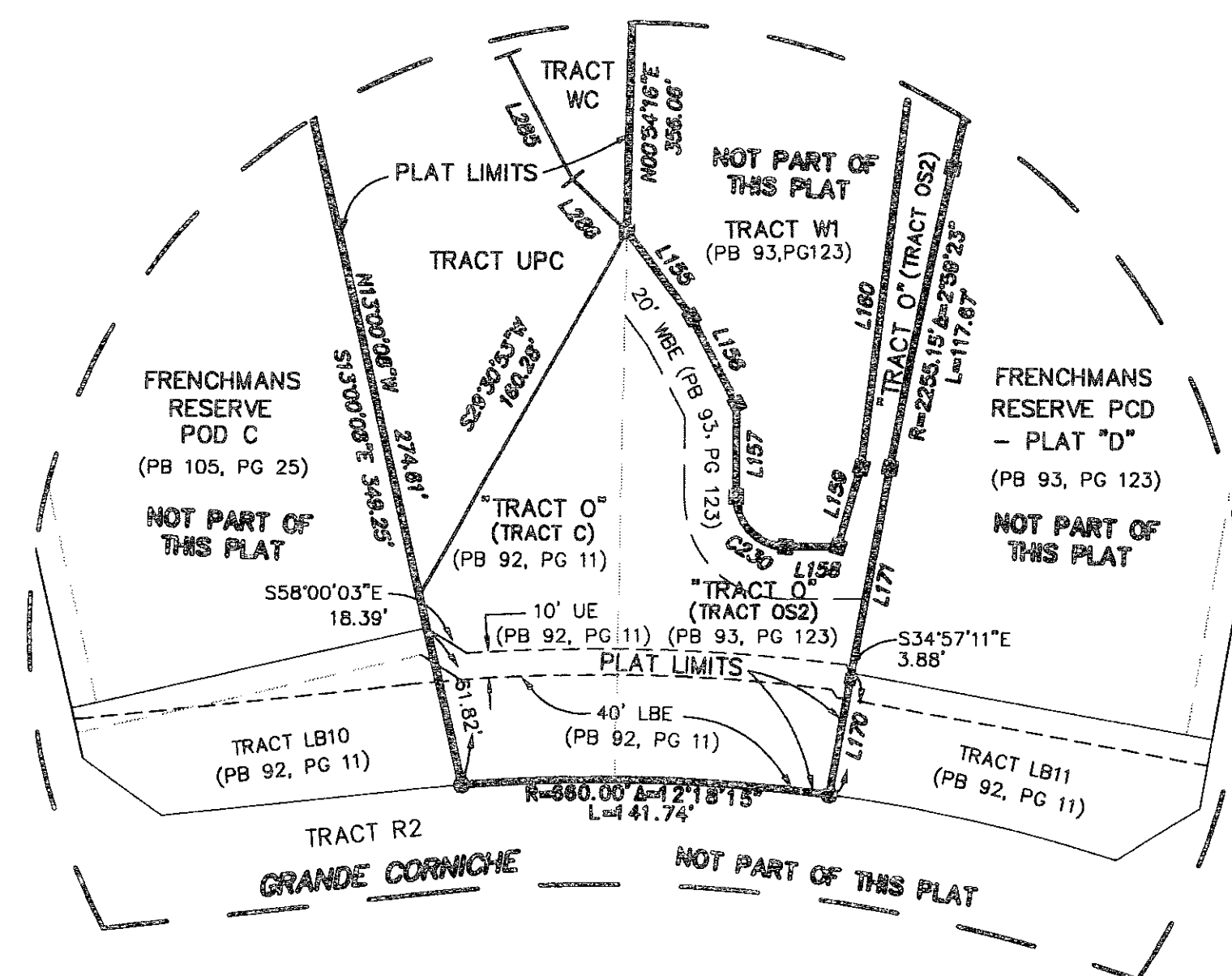
DETAIL 1  
FROM SHEET 7  
SCALE 1"=60'



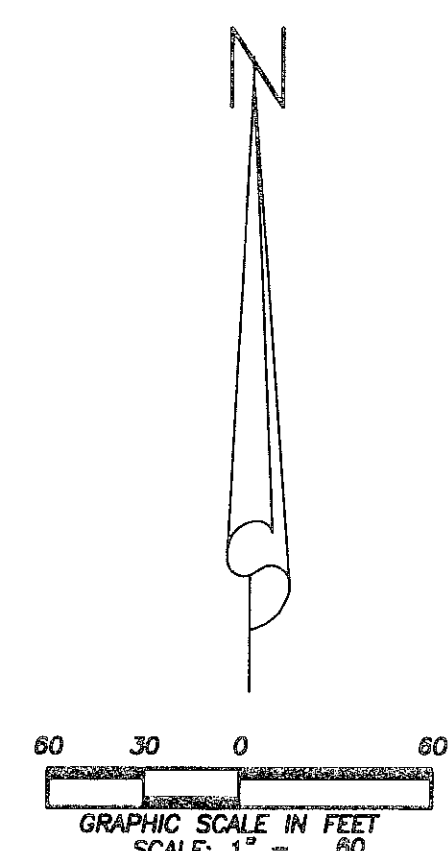
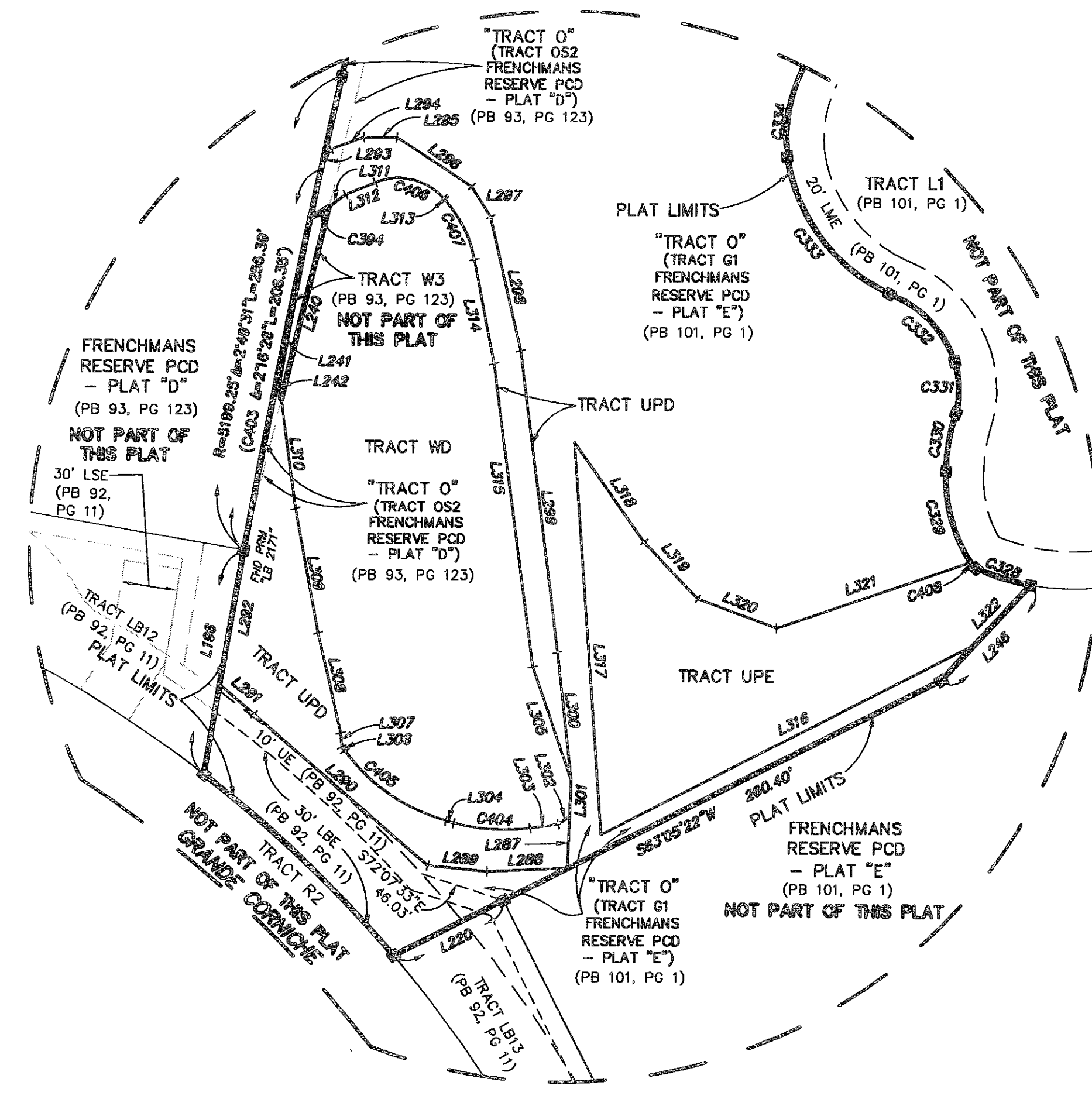
DETAIL 2  
FROM SHEETS 7 & 8  
SCALE 1"=60'



DETAIL 3  
FROM SHEET 9  
SCALE 1"=60'



DETAIL 4  
FROM SHEETS 9 & 10  
SCALE 1"=60'



- LEGEND:
- CL = CENTERLINE
  - DE = DRAINAGE EASEMENT
  - DB = DEED BOOK
  - Δ = DELTA
  - FND = FOUND
  - FPL = FLORIDA POWER & LIGHT
  - IP = IRON PIPE
  - IRC = IRON ROD WITH PLASTIC CAP
  - L = LENGTH
  - LAE = LIMITED ACCESS EASEMENT
  - LBE = LANDSCAPE BUFFER EASEMENT
  - LSE = LIFT STATION EASEMENT
  - LME = LAKE MAINTENANCE EASEMENT
  - LB = LICENSE BUSINESS
  - ORB = OFFICIAL RECORD BOOK
  - O/S = OFF SET
  - PBCO = PALM BEACH COUNTY
  - (P) = PLAT
  - PB = PLAT BOOK
  - PK = PARKER KEYLON NAIL
  - PRM = PERMANENT REFERENCE MONUMENT
  - PSUE = PRIVATE SPECIFIC USE EASEMENT
  - R = RADIUS
  - R/W = RIGHT-OF-WAY
  - SUE = SEACOAST UTILITY EASEMENT
  - UE = UTILITY EASEMENT
  - WBE = WETLAND BUFFER EASEMENT
  - WSE = WATER AND SEWER EASEMENT
  - ⊞ = SET PERMANENT REFERENCE MONUMENT (PRM) "LB 7055" UNLESS OTHERWISE NOTED
  - ⊙ = SET PK NAIL AND DISC "LB 7055" UNLESS OTHERWISE NOTED

**Wantman Group, Inc.**  
Engineering ♦ Surveying ♦ Mapping  
2035 VISTA PARKWAY, SUITE 100  
WEST PALM BEACH, FL 33411  
(561) 687-2220 phone (561) 687-1110 fax  
CERT No. 6091 - LB No. 7055  
THIS INSTRUMENT WAS PREPARED BY DEREK G. ZEMAN, P.S.M.  
PROFESSIONAL SURVEYOR AND MAPPER, LICENSE NO. 5655  
FOR THE FIRM: WANTMAN GROUP, INC.